


Air Live®
www.ovislink.com.tw

GE2032R-v2

*32-bit PCI 10/100/1000Mbps Gigabit
Ethernet Card*

Quick Setup Guide



Powered by OvisLink Corp.

FCC Warning

This equipment has been tested and found to comply with the regulations for a Class B digital device, pursuant to Part 15 of the FCC Rules. These limits are designed to provide reasonable protection against harmful interference when the equipment is operated in a commercial environment. This equipment generates, uses, and can radiate radio frequency energy and, if not installed and used in accordance with this user's guide, may cause harmful interference to radio communications. Operation of this equipment in a residential area is likely to cause harmful interference, in which case the user will be required to correct the interference at his own expense.

CE Mark Warning

This is a Class B product. In a domestic environment, this product may cause radio interference, in which case the user may be required to take adequate measures.

VCCI Warning

注意

この装置は、情報処理装置等電波障害自主規制協議会(VCCI)の基準に基づく第一種情報技術装置です。この装置を家庭環境で使用すると電波妨害を引き起こすことがあります。この場合には使用者が適切な対策を講ずるよう要求されることがあります。

Important Notice

- ◆ GE-2032R-v2 adapter card provides various network drivers on the driver CD. GE-2032R-v2 supports Windows 98/ME/NT/2000/XP, Linux Kernel 2.2.x(Redhat 6.2), Linux Kernel 2.4.x (Redhat 7.2), Novell, DOS/ODI, MAC OSX 10.2 or newer.
- ◆ Please choose the driver directory that match to your OS from the installation CD, and select the driver to setup the NIC card.
- ◆ If you not sure how to install the NIC card, select the HELP directory for detail.
- ◆ For the latest driver, please visit OvisLink's website at www.ovislink.com.tw

Hardware Installation

The NIC installation involves the following steps:

Step 1. Insert the network interface card

1. Turn off the computer and unplug the power cord from the power outlet.
2. Remove the computer cover.
3. Insert the NIC into an available 32-bit PCI expansion slot.



Note: If you do not know how to identify a 32-bit PCI slot on your system, please check your PC user manual or ask your system administrator. Make sure the NIC is inserted firmly in the 32-bit PCI bus-mastering slot.

4. Secure the NIC in the slot with a bracket screw.
5. Replace the computer cover.
6. If you want to insert another NIC into your system, repeat steps 1 - 5.
7. Turn on the system power.

Step 2. Connect the Card to the network

1. Plug one end of the cable into the RJ-45 Gigabit port of the NIC.
2. Plug the other end of the cable into a Gigabit port of a Gigabit Ethernet Switch (such as Live-GSH8T) or a high-performance server with a gigabit RJ-45 port.

Step 3. Configure your Network

You must install network driver to allow the NIC to work with your network operating system.

Driver Installation

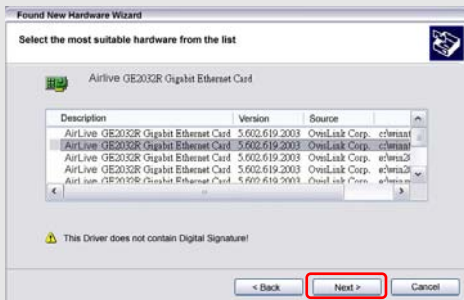
Windows XP Driver Installation

Step 1: Install the card into the computer according to the instruction on **Hardware Installation**. After rebooting, the Windows should automatically detect the Card and start the "Found New Hardware Wizard". Insert the "OvisLink CD" into the computer and press "next".



Note: If the computer doesn't start the installation wizard automatically, please go to "Control Panel" and select "Add New Hardware".

Step2: The computer should automatically search for the driver on the CD and display available drivers. Press "Next" to continue.



Step3: When the following warning message appears about “Windows Logo testing”, please ignore the message and press “Continue Anyway” to proceed.



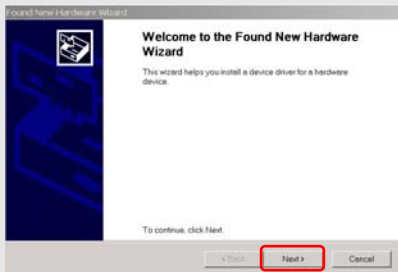
Step4: After pressing the button, the Windows will start copying the files.



Step 5: Click “Finish” to complete the driver installation.

Windows 2000 Driver Installation

Step 1: Install the card into the computer according to the instruction on **Hardware Installation**. After rebooting, the Windows should automatically detect the Card and start the “Found New Hardware Wizard”. Insert the “OvisLink CD” into the computer and press “next”.

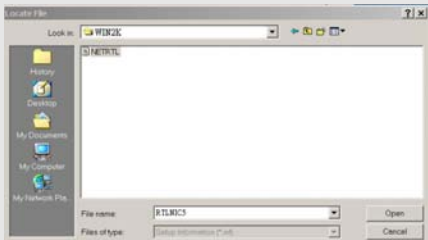


Note: If the computer doesn't start the installation wizard automatically, please go to “Control Panel” and select “Add New Hardware”.

Step 2: Select “Search for a suitable driver for my device.” and then press “next” to continue.

Step 3: check the “Specify a location”. and then press “next” to continue.

Step 4: Click on “Browse” button to select “OvisLink CD”, and then double click on “WIN2K” directory.



Step6: Select “RTLNIC5.SYS” file, then click on “Open”. Click on “Next” to proceed.

Step7: If the following warning message about “Mirosoft Digital signature” appears, press “Yes” to continue installation.



Step 8: The Windows will start copying files, click on “Finish” to complete the installation.

Windows 98SE Driver Installation

Note: Please have the Windows 98 CD ready, you might need your Windows CD to complete the installation.

Step 1: Install the card into the computer according to the instruction on **Hardware Installation**. After rebooting, the Windows should automatically detect the Card and start the “Add New Hardware Wizard”. Insert the “OvisLink CD” into the computer and press “next”.



Note: If the computer doesn't start the installation wizard automatically, please go to "Control Panel" and select "Add New Hardware".

- Step 2: Select "Search for the best driver....." and then press "next" to continue.
- Step 3: Uncheck the "CD-ROM drives" and check "Specify a location". Then Click on "Browse".
- Step 4: Select the "WIN98SE" directory under the "OvisLink CD", click "Okay" to continue.
- Step 5: The Win98 will find the driver "RTLNIC5.SYS", click next to start installation.
- Step6: The Windows will now ask for the Windows 98 CD.
- Step7: Insert the Windows 98 CD or direct Windows to where the Windows 98 installation files are. Then click "ok"
- Step8: The Windows will now start copying installation files.
- Step 9: Click "Finish" to complete the driver installation.

Windows ME Driver Installation

Step 1: Install the card into the computer according to the instruction on **Hardware Installation**. After rebooting, the Windows should automatically detect the Card and start the "Add New Hardware Wizard". Insert the "OvisLink CD" into the computer and press "next".



Note: If the computer doesn't start the installation wizard automatically, please go to "Control Panel" and select "Add New Hardware".

Step 2: Select Specify a location, and click the Browse button.

Step 3: On the Browse for Folder dialog box appears. Select "OvisLink CD", and then select the "WINME" directory.

Step 4: The WinME will find the driver "RTLNIC5.SYS" and click "Next" to start installation.

Step 5: Click "Finish" to complete the driver installation.

LED Indicators

GE-2032R-v2 comes with two LED indicators on the backplane of the adapter. LED indicators inform you about the network status as shown in the Figure below. If you experience any problem with the adapter, first check the followings:

- ◆ the appropriate driver is loaded
- ◆ the proper cable is connected to the RJ-45 port of the adapter
- ◆ the switch should complies with the 10/100/1000BASE-TX specifications.

You should make sure that all the above requirements are met, and then check the LEDs again to make sure the connection is valid and working.

LED	Color	Status	Meaning
Link	Green	On	10/100/1000 Mbps Gigabit Ethernet connecting
Activity (ACT)	Green	Blinking	The port is receiving or transmitting data