


Air Live®
www.ovislink.com.tw

WL-5400CAM

Wireless Internet IP Camera

Quick Setup Guide



Powered by OvisLink Corp.

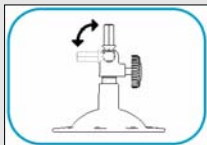
Important Information

- The default IP address is **192.168.0.20**
- System Requirement:**
 - ◆ CPU: Intel Pentium II 266MHz or above
 - ◆ Memory: 32MB (64MB recommended)
 - ◆ VGA resolution: 800x600 or above

Hardware Installation

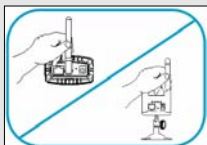
Attaching the Camera Stand

The Wireless Internet Camera comes with a camera stand, which has a swivel ball screw head that can be attached to the camera's screw hole on the top/bottom panel. Attach the camera stand to the camera and station it for your application.



Installing the Antenna

(for wireless model) Connect an Ethernet cable to the network cable connector located on the camera's rear panel, and then connect it to the network.



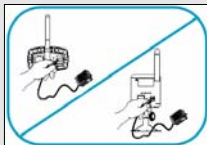
Connecting the Ethernet Cable

Connect an Ethernet cable to the network cable connector located on the camera's rear panel, and then connects it to the network.



Connecting the Power Supply

Connect the external power supply to the DC power input connector located on the camera's rear panel, and then connects it to your wall outlet. (**Tip:** You can confirm the power source is supplied from the Power LED on the camera.)

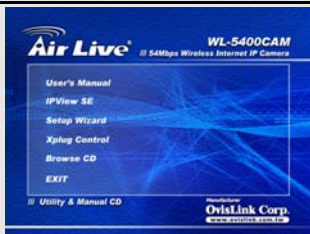


Running the Setup Wizard

The Setup Wizard is a convenient tool that will guide you through the installation of your camera easily and quickly. After connecting the camera to your computer, you can install the Setup Wizard and complete the configuration now.

1. Insert the Installation CD-ROM into your CD-ROM drive.

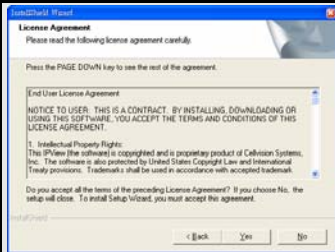
Click **Install Wizard**.

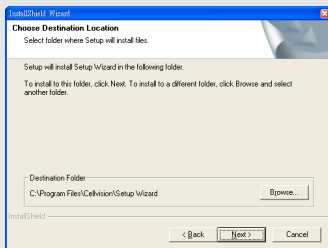


2. Click **Next**.

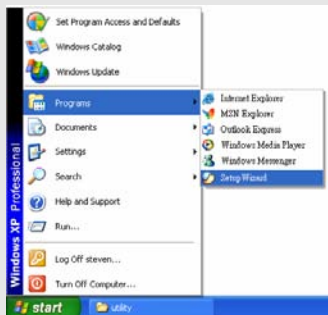


3. Click **Yes**.



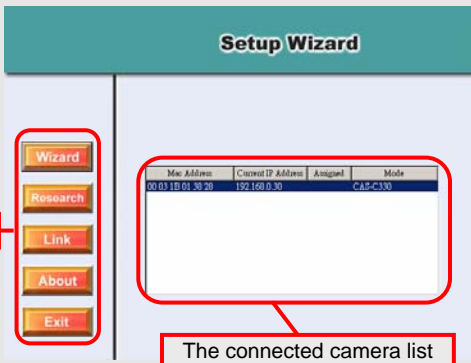
4. Click **Next**.5. Click **Finish**.

To run the Setup Wizard, click
**Start -> Programs -> Setup
Wizard.**

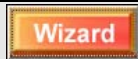


Using the Setup Wizard

When you launch the Setup Wizard, the main window will appear as shown, and the connected camera will be displayed in the list.



The components on the Setup Wizard:



Click **Wizard** to begin configuring the selected camera.



Click **Research** allows you to search the connected camera again.



Click **Link** to launch the web browser and view the images.



Click **About** to show the general information of the selected camera.



Click **Exit** to close the Setup Wizard.

Changing the Admin ID and Password

By default settings, the Admin ID and Password are blank. For security purpose, you are recommended to change the Admin ID and Password immediately.

Click **Wizard**. The dialog box as shown appears, asking you to enter the Admin ID and Password.
Click **OK**.

If required, select the **Change** options and enter the new Admin ID and Password.
Click **Next**.

The settings of IP Address, Subnet Mask and Default Gateway must correspond with your camera and networking settings.
Please check with your network administrator for correct settings.
Click **Next**.

The **Connection Mode** depends on how your camera is connected to your network. Click **Infrastructure** for use with a router or **Adhoc** for peer-to-peer. The **Network Name**, **Wireless Channel**, and **Encryption Key** MUST correspond with your wireless network settings.

This window displays the settings you set up. For any change, click **Back** to modify your settings. Otherwise, click **Restart** to save and apply the settings.

Setup Wizard

Admin ID:

Password:

IP Address:

Subnet:

SSID:

Channel:

WEP Key:

The Setup Wizard has completed. Click on **Back** to modify your settings. Click **Restart** to save your current settings and reboot the MPE04 Wireless Internet Camera.

[Back](#) [Restart](#)

The configuration is completed, and you will return to the main window. Click **Link** to launch the web browser and view the images.

Setup Wizard

[Wizard](#)

[Restart](#)

[Link](#)

[About](#)

[Exit](#)

Mac Address	Current Address	Assign	Mode
00:0C:29:00:00:00	192.168.0.20	Assign	Camera

AirLive WL-5400CAM IP Camera

- View Video - ActiveX Mode
- View Video - Java Mode
- System Administration



View Image - ActiveX Mode

[Home](#)

CS-586CBE

2005-03-08 19:50:59

- Upload Video ON OFF [OFF]
- E-mail Video ON OFF [OFF]





OvisLink Corporation declares that this device is
in compliance with the essential requirements and
other relevant provisions of directive 1999/5/EC



Tested To Comply
With FCC Standards
FOR HOME OR OFFICE USE



OvisLink Corp.

2F, NO.8 Lane 130, Min Chuan Road, Hsin-Tien City Taipei, Taiwan